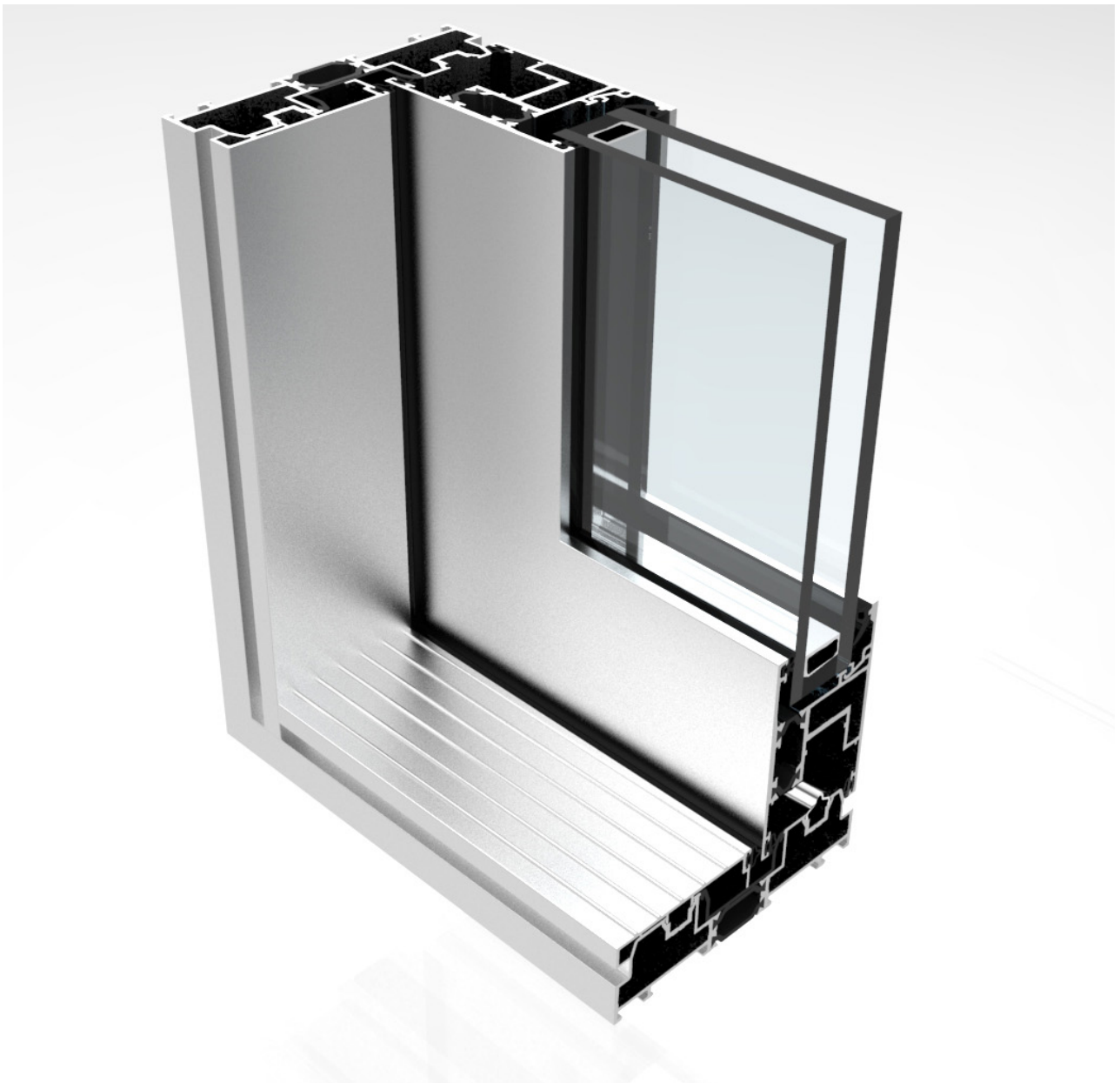
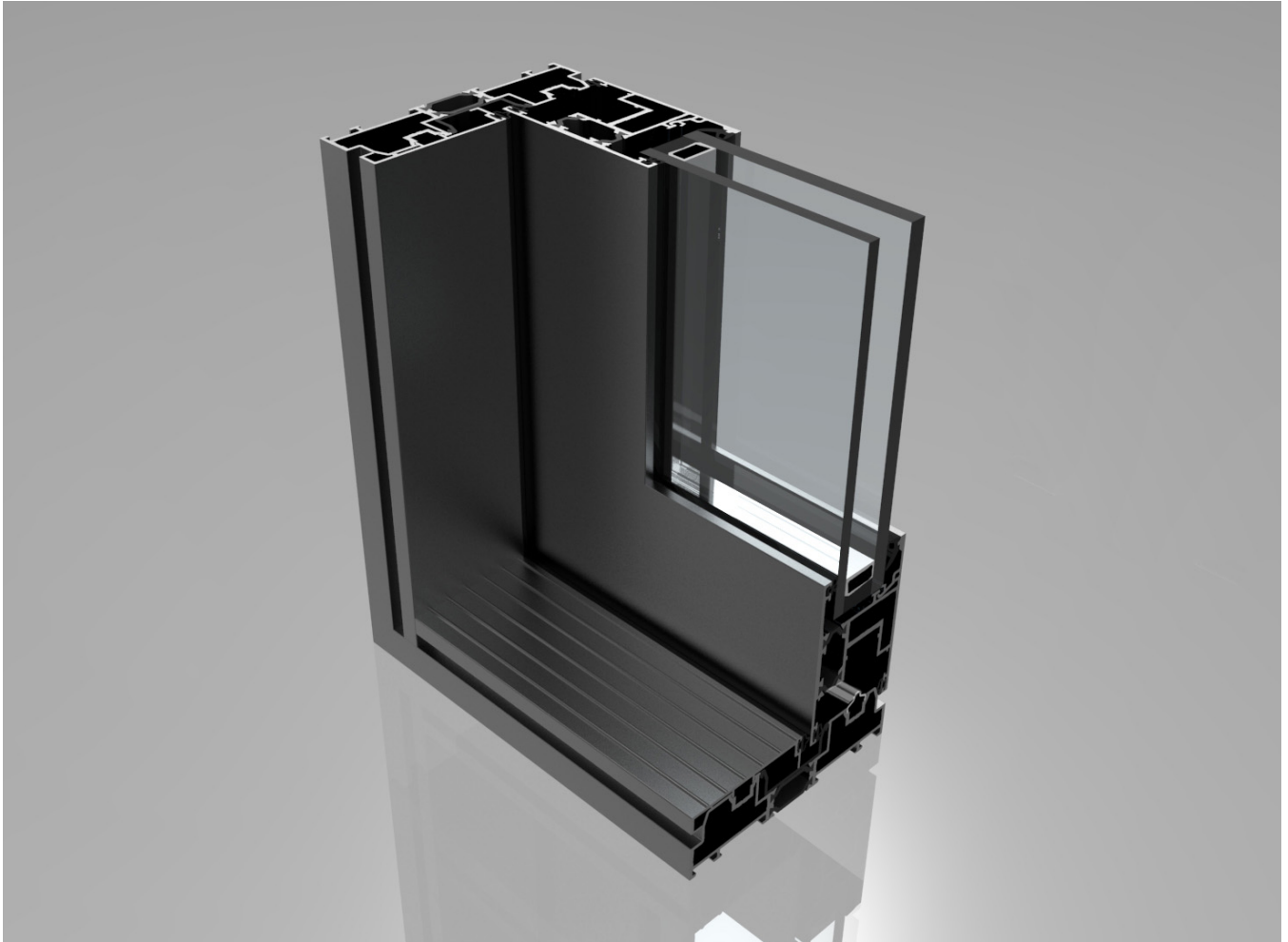


GUTMANN SC125 Lift and Slide





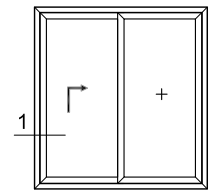
GUTMANN SC125 Hebe-Schiebetür | GUTMANN SC125 Lift & Slide Doors

System Description

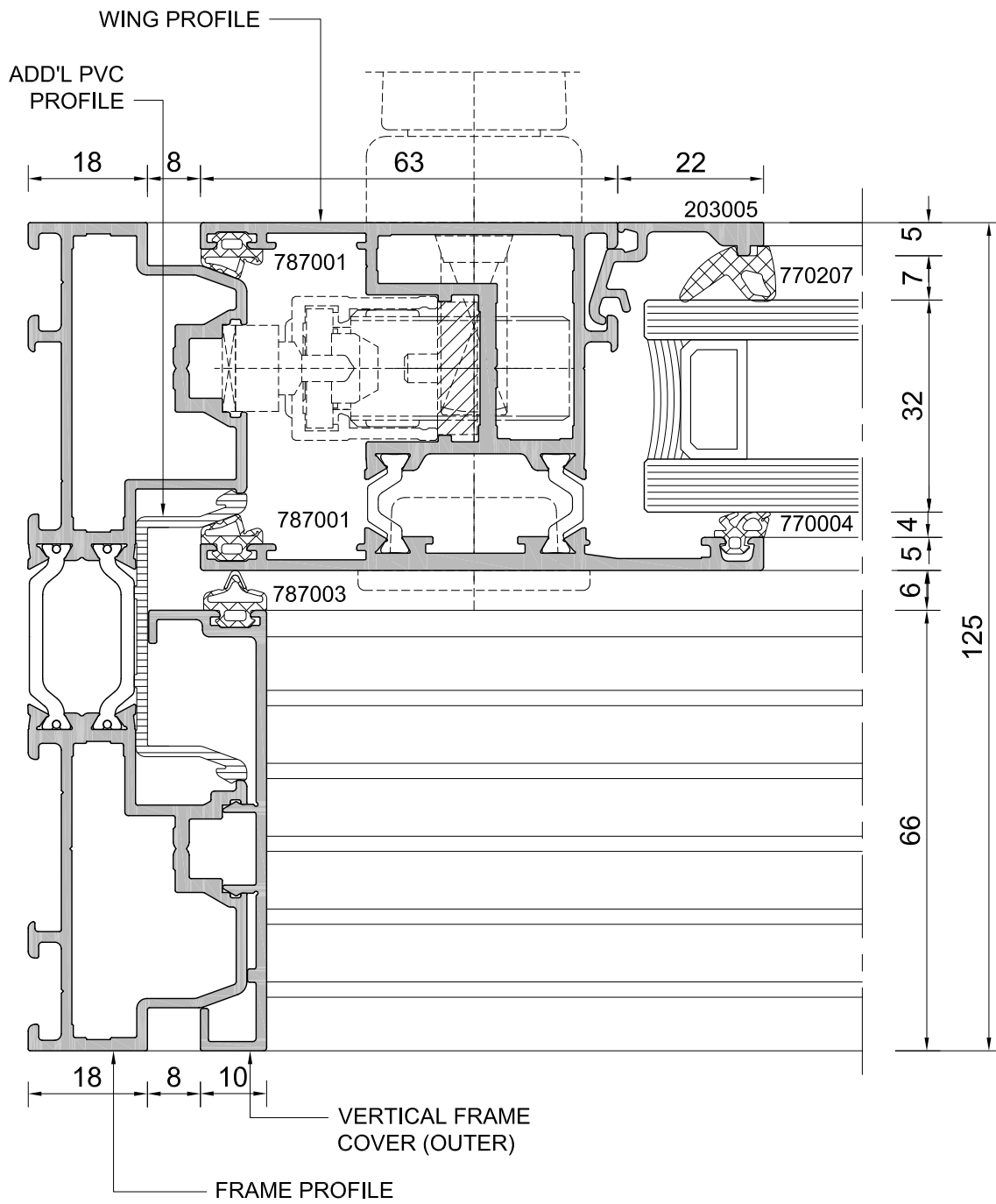
Premium lift and slide door with 52.5 mm sash profile depth with mean value of $U_f = 2.9 \text{ W/m}^2\text{K}$.

- Window frame manufactured with mitre joints.
- Symmetrical profile design for identical accessories.
- Construction depth: Frame 125 mm, sash 52.5 mm.
- Maximum sash size W x H 2485 x 2675mm with sash weight of up to 200 kg.
- Filling thicknesses opaque and transparent: Max. 34 mm.
- Wide range of colours, different colours inside & outside
- High degree of prefabrication possible in the factory.
- Simple installation of the sash elements.
- Uncomplicated sealing in the center joint through intelligent sealing system.
- All clip-on profiles can be secured mechanically where re-quired.
- S70+ standard glazing system with accessories can be used

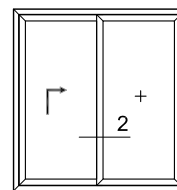
Regular details



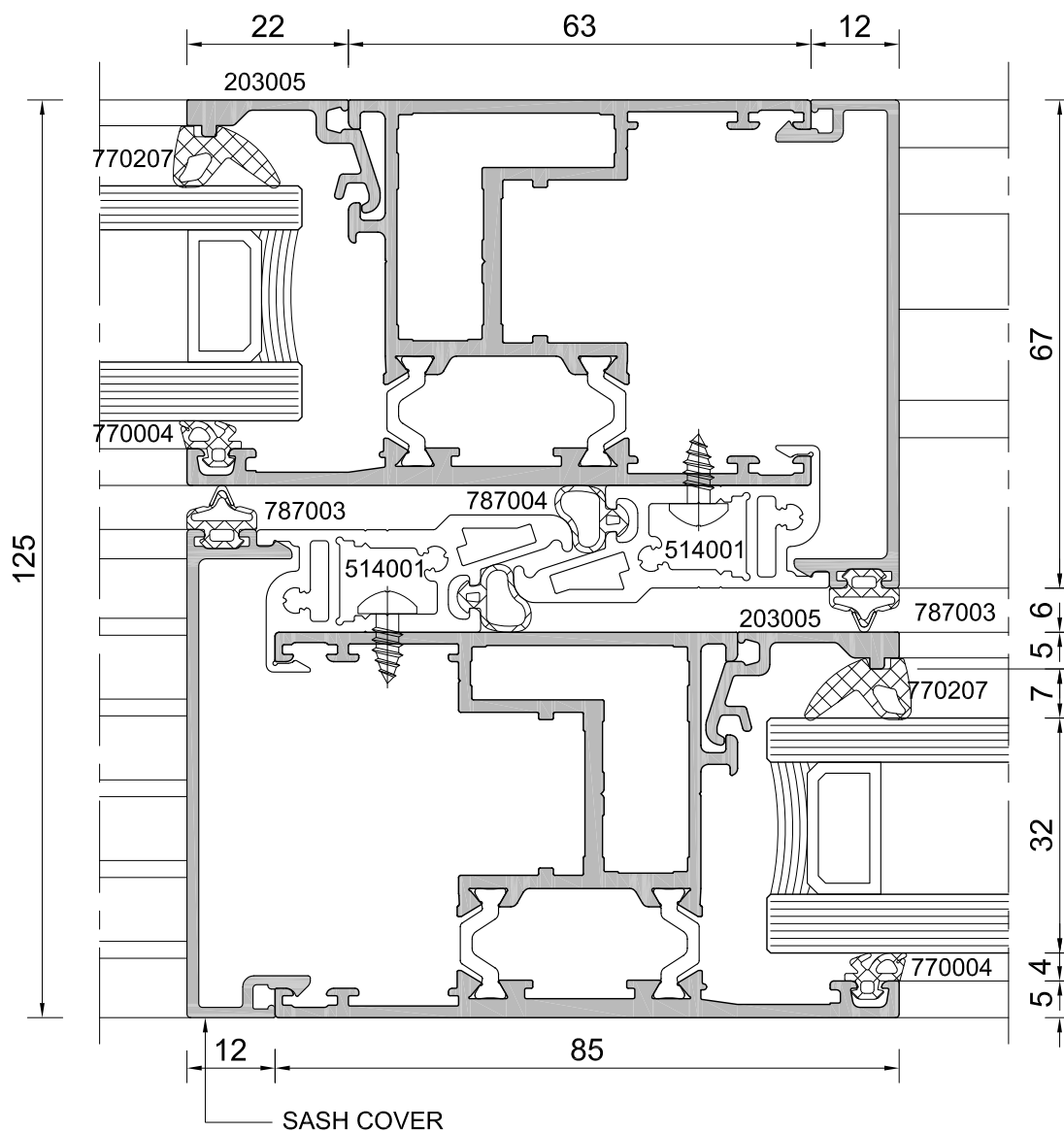
Scheme A
(view outside)



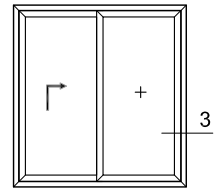
Regular details



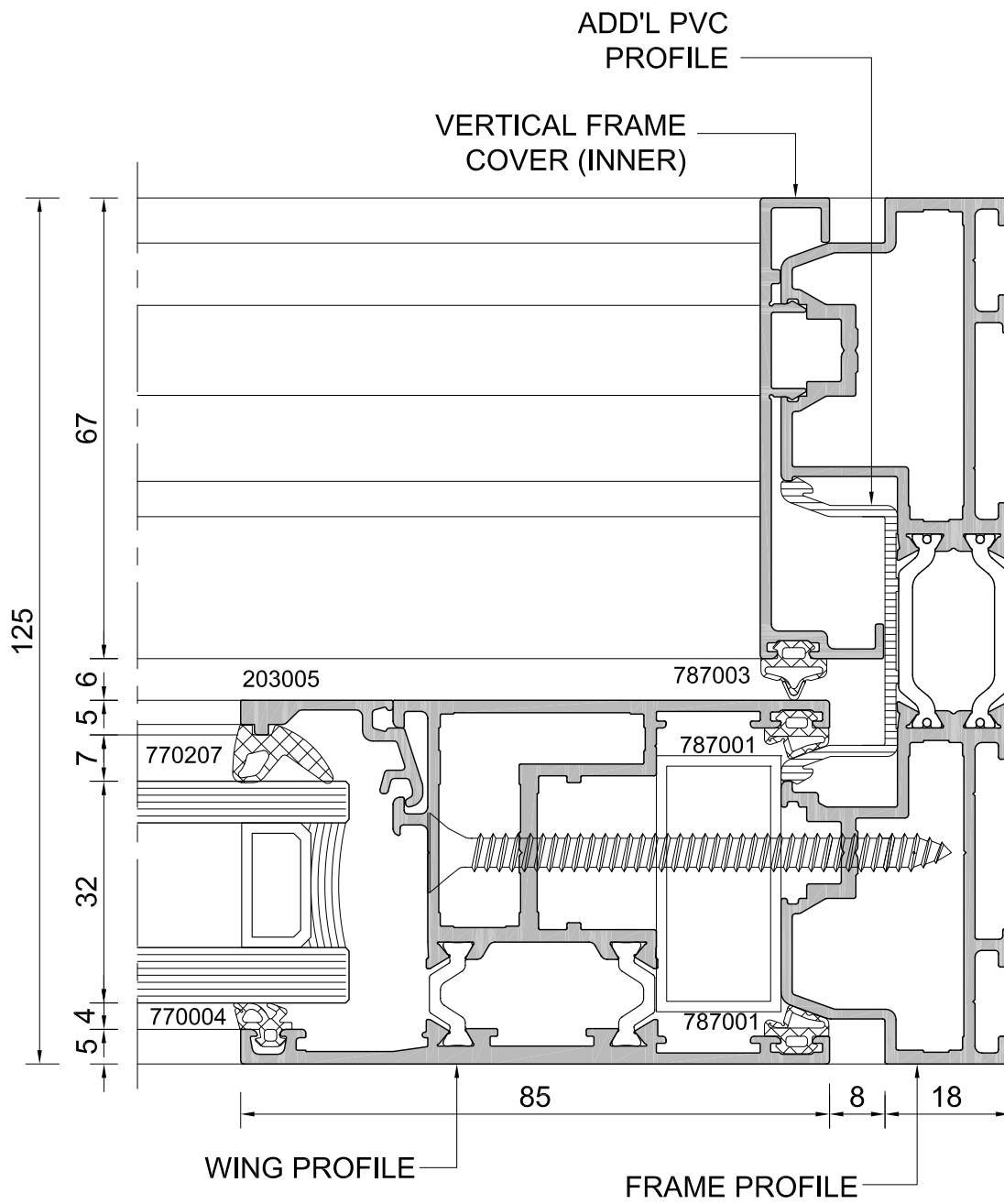
Scheme A
(view outside)



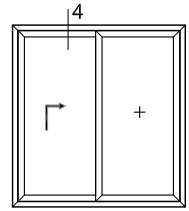
Regular details



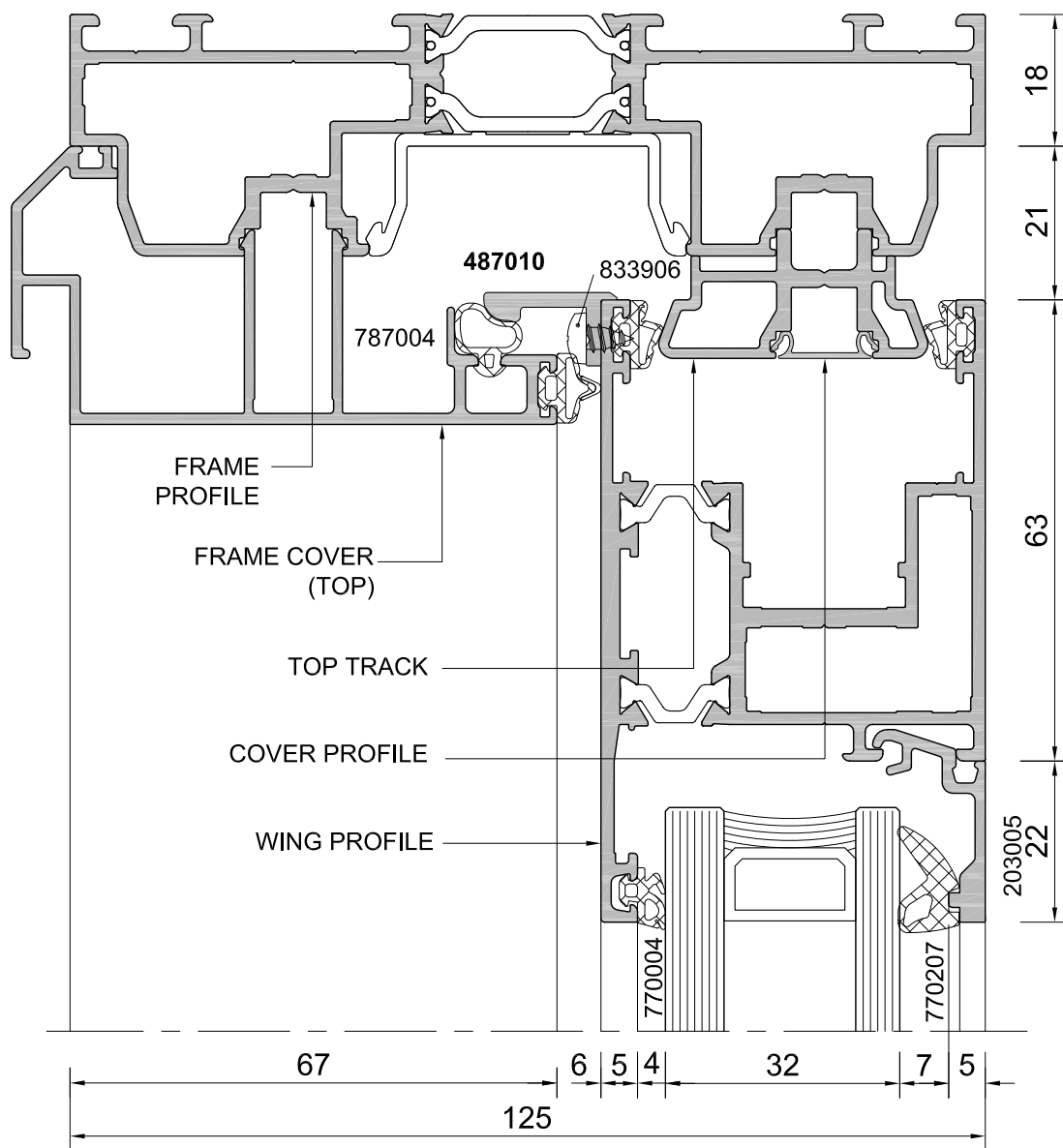
Scheme A
(view outside)



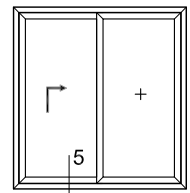
Regular details



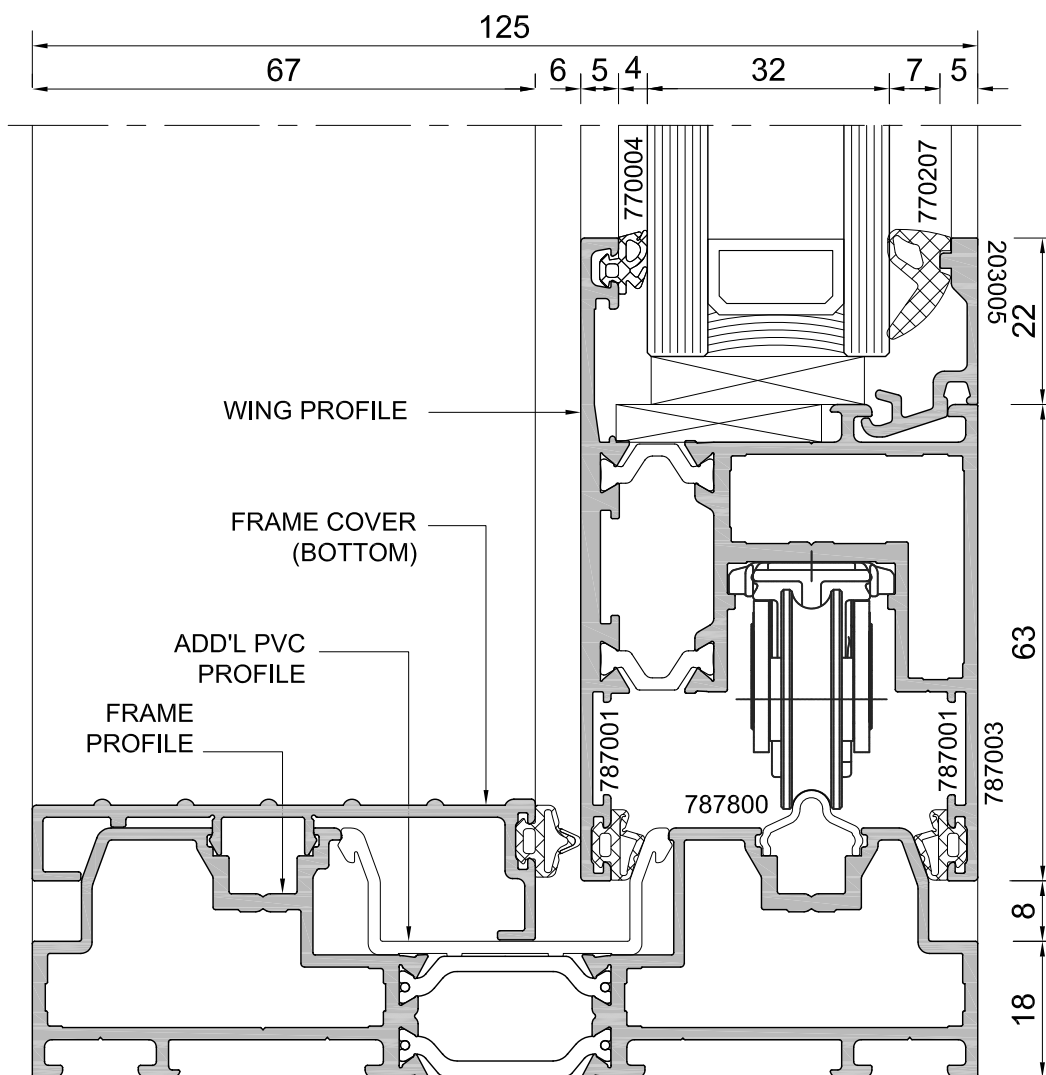
Scheme A
(view outside)



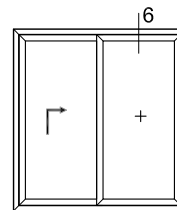
Regular details



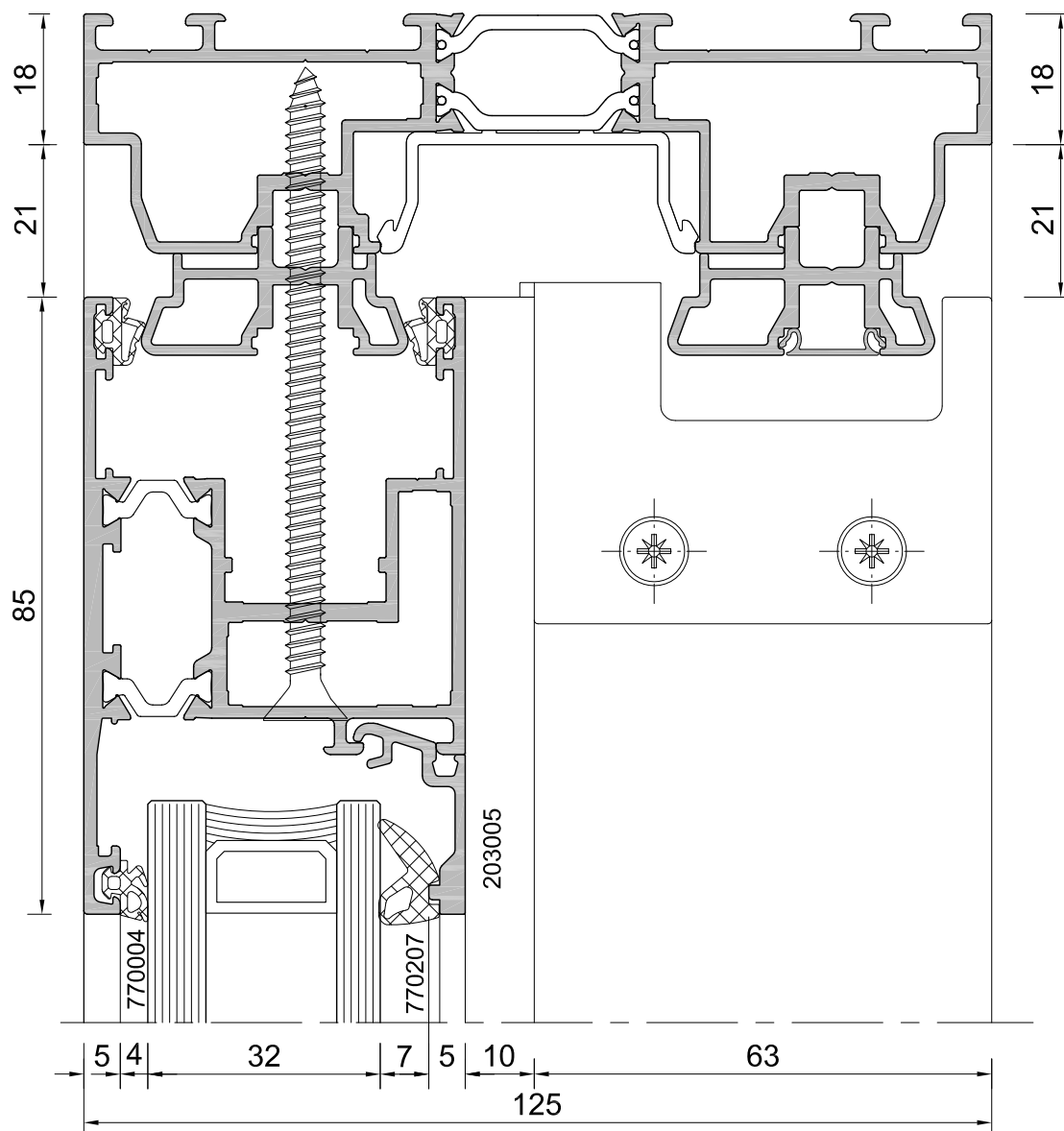
Scheme A
(view outside)



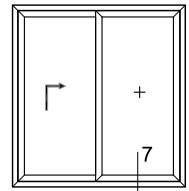
Regular details



Scheme A
(view outside)



Regular details



Scheme A
(view outside)

